



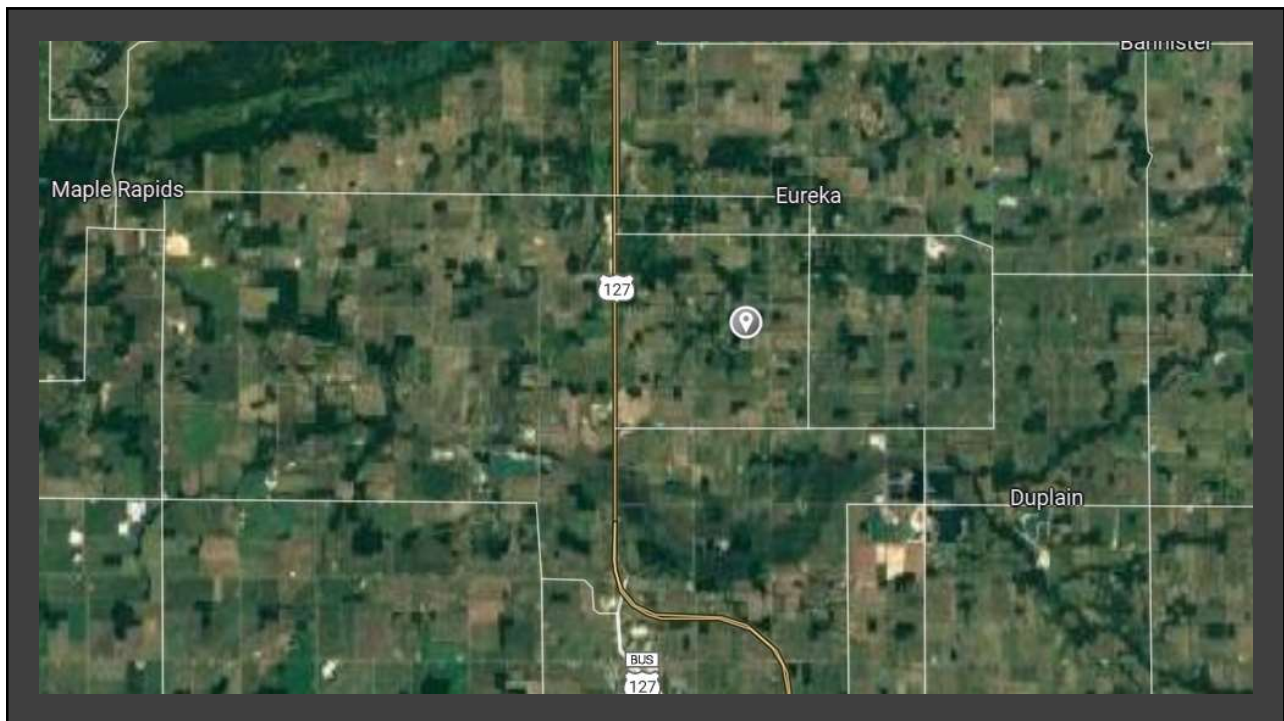
Sustainably Managing Woodlots for Generations

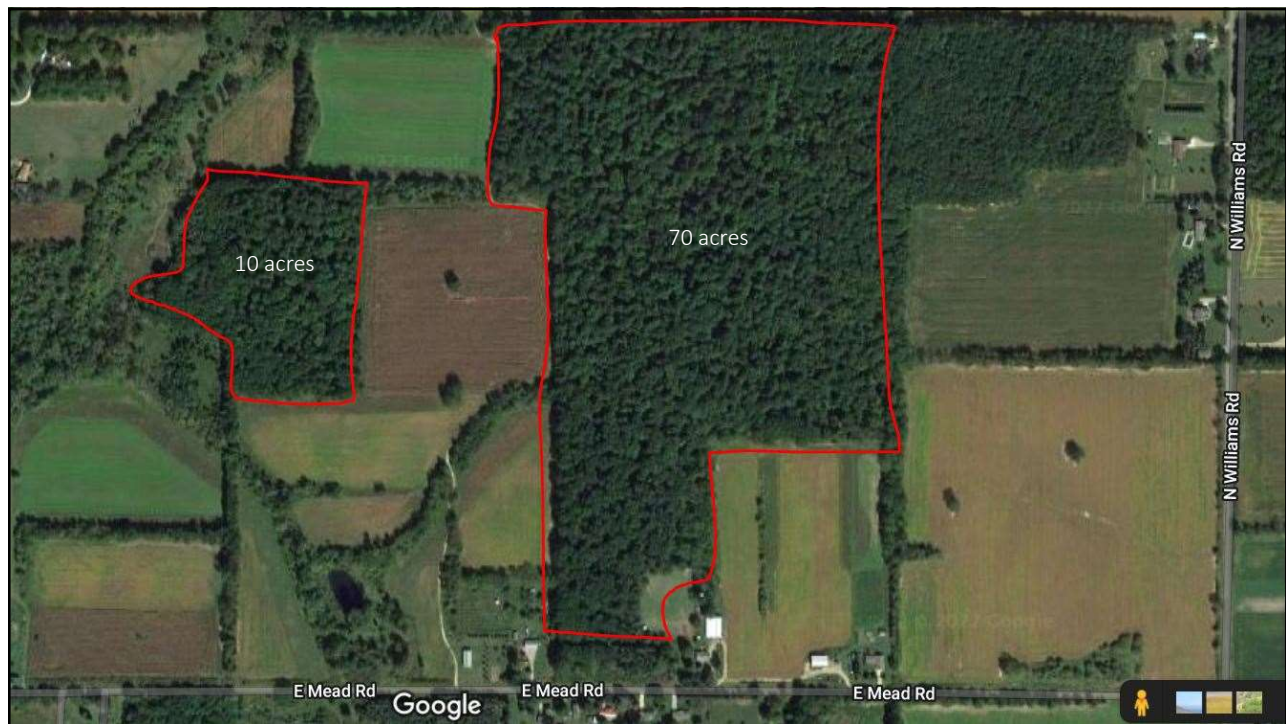
Jim Graham

Woodland Bird Hunting Preserve

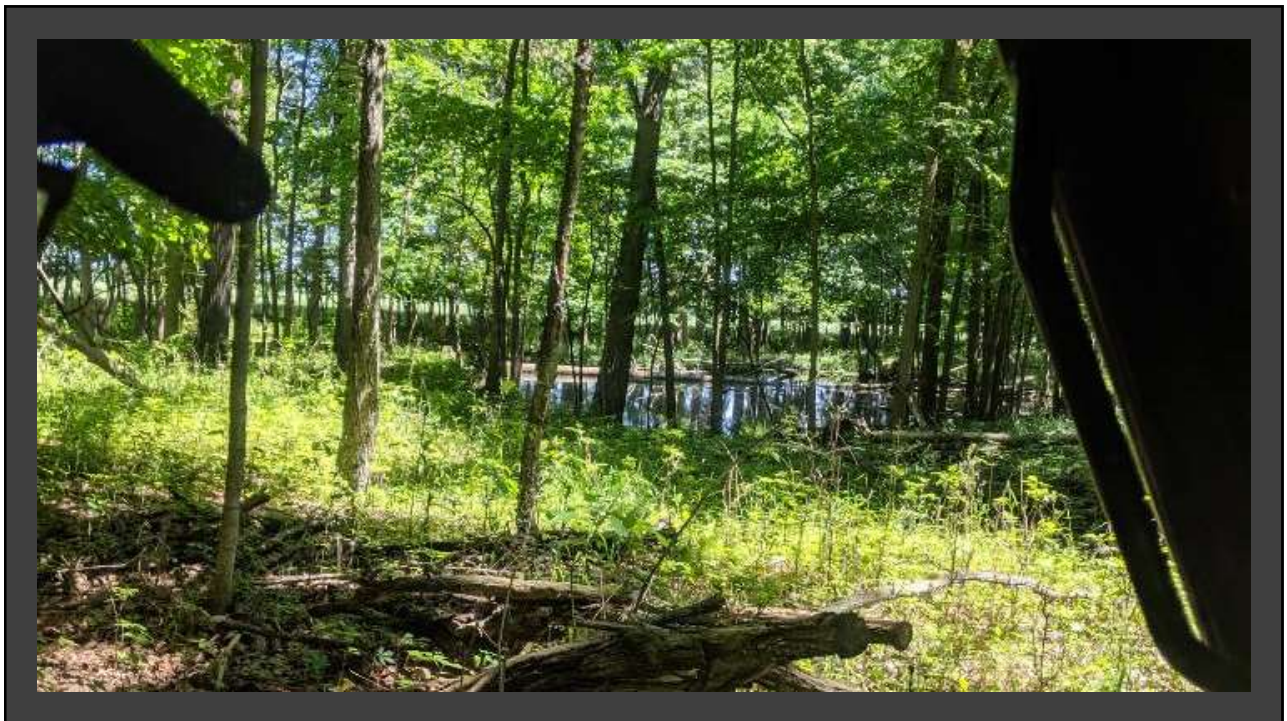
Clinton Conservation District

SWCS March 11, 2022





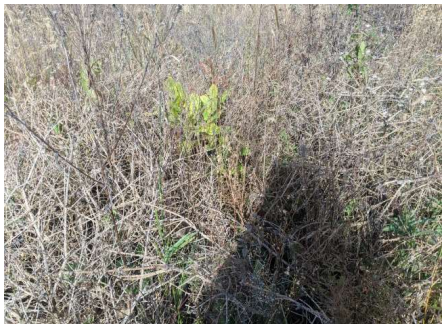
History of the Property





Activities in the Woods

- hunting
- firewood
- timber
- Classroom field trips
- Workshops



**Tree Plantings to
increase diversity for
wildlife**





| ***** | | | |
|------------------------------|----------------|---------------------------------|-----------------------|
| June 2012, Clinton County | | | |
| <u>SPECIE</u> | <u># Trees</u> | <u>NET VOLUME (DOYAL) SCALE</u> | <u>BIDS</u> |
| Red Oak | 119 | 48,166 | 92,486.00 (\$523/MBF) |
| Soft Maple | 128 | 32,182 | 70,894.00 |
| Hard Maple | 64 | 21,370 | 70,821.00 |
| Black Oak | 74 | 20,870 | 70,150.00 |
| White Oak | 72 | 18,300 | 67,625.00 |
| Black Cherry | 57 | 9,710 | 61,879.44 |
| White Ash | 43 | 7,498 | 61,194.00 |
| Black Walnut | 12 | 4,040 | 54,000.00 |
| Burr Oak | 13 | 3,960 | 50,010.00 |
| Beech | 19 | 3,646 | |
| Cottonwood/popple | 17 | 2,968 | |
| Hickory | 15 | 2,470 | |
| Basswood | 5 | 1,397 | |
| Elm | 2 | 244 | |
| 640 Trees | | 176,820 Bd.Ft. | |
| ----- | | | |
| GOOD FORESTRY SERVICES, PLLC | | | |
| DENNIS GOOD, ACF | | | |
| 1107 S. Lacey Lake Rd. | | | |



2022 Current Harvest







