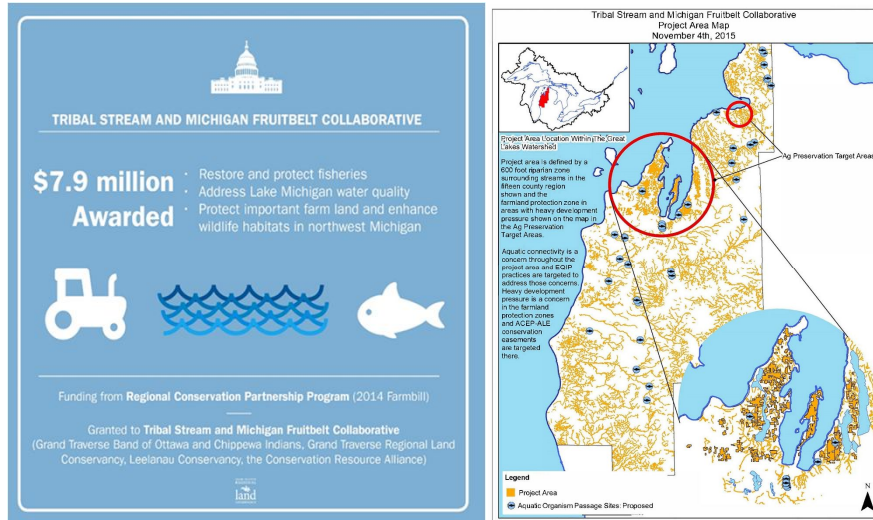


## Tribal Stream and Michigan Fruitbelt Collaborative-Michigan Chapter Soil & Water Conservation Society: March, 2019



## Intertwining Land and Water Conservation

Protecting 2066 acres of specialty-crop farmland

Remove 40 aquatic organism passage barriers

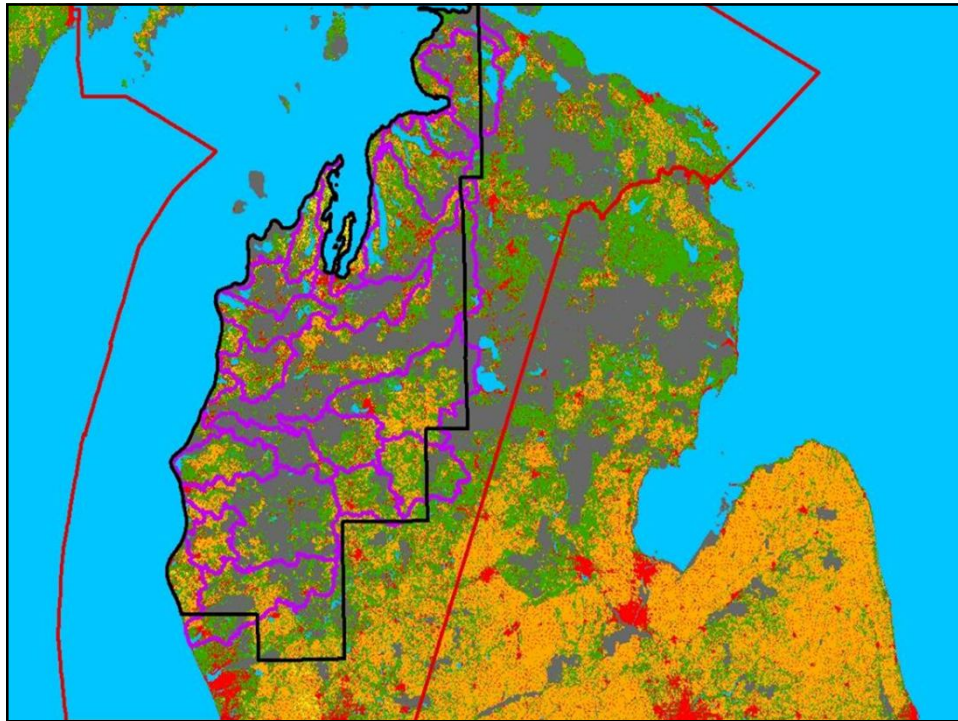
Open 135 miles of stream in multiple watersheds

Prevent and reduce sediment and nutrient loading

Encourage producers to adopt enhanced on-farm water retention techniques.



Original Contributing Partners	Momentum Growing- New Partners
<ul style="list-style-type: none"> <li>▪ <b>Federal agencies:</b> United States Fish and Wildlife Service, United States Forest Service-Huron Manistee National Forest</li> <li>▪ <b>Sovereign Nations:</b> Grand Traverse Band of Ottawa and Chippewa Indians (GTB), Little Traverse Bay Bands of Odawa Indians (LTBB);</li> <li>▪ <b>State agencies:</b> Michigan Department of Natural Resources, Michigan Department of Environmental Quality;</li> <li>▪ <b>Local units of government:</b> Acme Township, Peninsula Township, Grand Traverse County Road Commission, Leelanau County Road Commission, Emmet County Road Commission;</li> <li>▪ <b>Soil and water conservation districts:</b> Grand Traverse Conservation District, Leelanau Conservation District, Benzie Conservation District;</li> <li>▪ <b>Non-profit organizations:</b> Grand Traverse Regional Land Conservancy, Leelanau Conservancy, Conservation Resource Alliance, Little Traverse Conservancy, Land Trust Alliance; and</li> <li>▪ <b>Trusts to protect natural resources:</b> Great Lakes Fishery Trust, American Farmland Trust.</li> </ul>	<ul style="list-style-type: none"> <li>▪ <b>Sovereign Nations:</b> Little River Band of Ottawa Indians- Syers Lake Dam Removal Project-Little Manistee watershed;</li> <li>▪ <b>Landowners:</b> Dale and Lisa Pominville-Syers Lake Dam Removal Project-Little Manistee watershed;</li> <li>▪ <b>Local units of government:</b> Milton Township-Farmland Protection (ACEP); Lake County Road Commission-Queens Hwy and Sanborn Creek Projects-Pere Marquette Watershed; Wexford County Road Commission- Soper and Hinton Creek Projects-Manistee Watershed; Benzie County Road Commission-Benzie Phase 4 Projects-Platte River Watershed; and</li> <li>▪ <b>Soil and water conservation districts:</b> Mason-Lake Conservation District-Queens Hwy Project-Pere Marquette Watershed.</li> </ul>



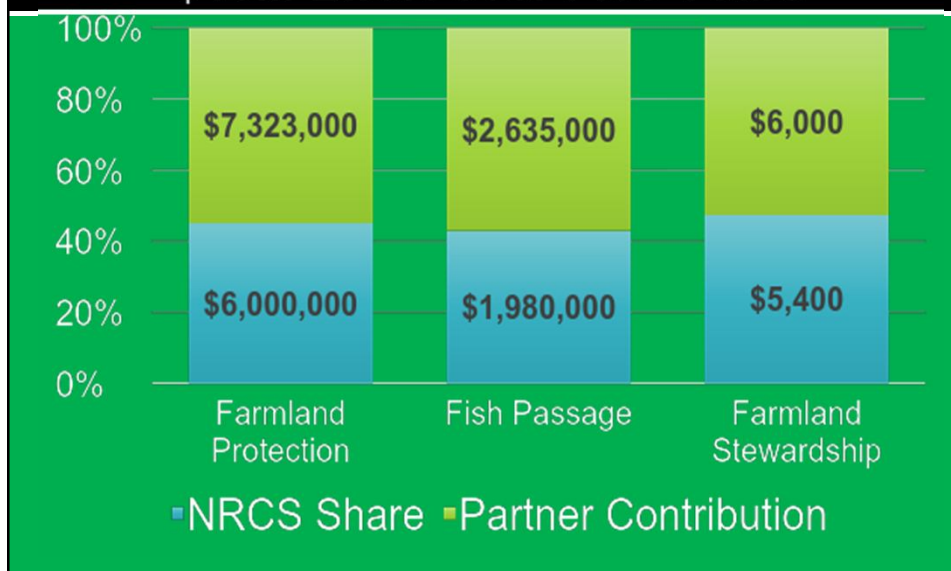
## Tribal Stream and Michigan Fruitbelt Collaborative

### RCPP Program Options:

- 1) Agricultural Conservation Easement Program (ACEP)
  - a) ACEP – Wetland Reserve Easements (WRE)
  - b) ACEP – Agricultural Land Easements (ALE)
- 2) Environmental Quality Incentive Program (EQIP)
- 3) Conservation Stewardship Program (CSP)
- 4) Healthy Forest Reserve Program (HFRP)
- 5) PL 83-566 Watershed Authority



## Project Financials \$18M Effort over Five Years



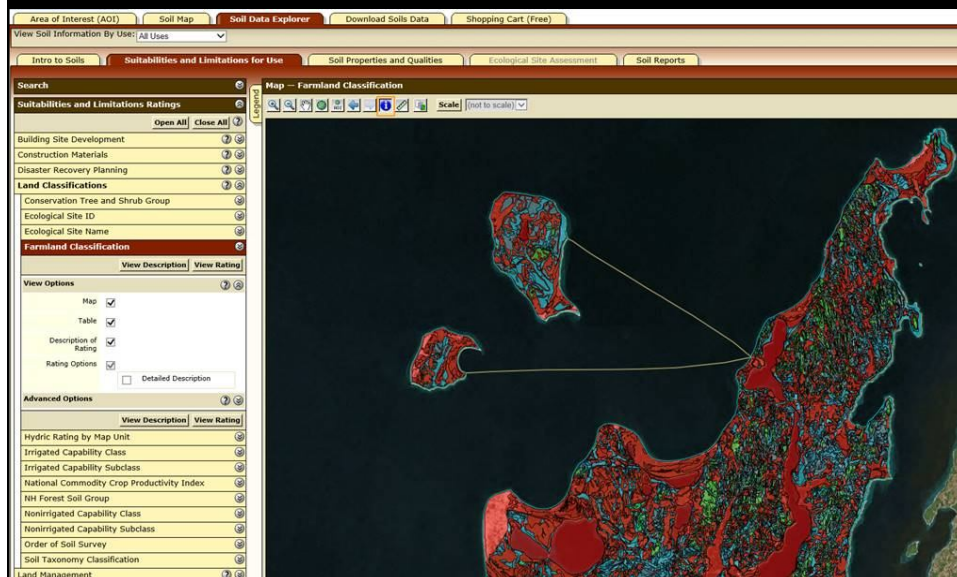
## Agricultural Conservation Easement Program

Name	Location	Acreage	Type	Conservation Values
Cherries R Da Berries	Acme Twp, Grand Traverse Co	167	25% Donation Acme PDR Match	-Prime and unique soils, soils of local importance. -Proximity to protected land -Frontage on Yuba Creek -Agricultural, scenic, and open space values



Photos: Laura Rigan-GTRLC

## Agricultural Conservation Easement Program







Environmental Quality Incentives  
Program-Maple River/Brutus Road Stream  
Crossing



Photos: Chris Pierce-CRA

## Carp River/Gill Rd.

Inlet



Outlet



Photos: NRCS (top) and LTRB

Watershed	Carp Lake River
Site Location	Carp Lake, MI
Miles Opened Up	5.28
Funding	RCP, County Road Commission, Tribal NPS, Tribal BIA
Species to Benefit	Coldwater Fish and Endangered Hungerford's Crawling Water Beetle
Tons of Sediment Reduced	0.0825 tons/year

**Est. Total Project Cost: \$247, 542**

## Carp River Obstacles

- Prices going up for timber bridges
- Hungerford's Crawling Water Beetle—are road/stream improvements beneficial?, NEPA Section 7
- Did not get funding from two different proposals
- We are concerned EPA NPS funds will not be a good fit for fish passage restoration

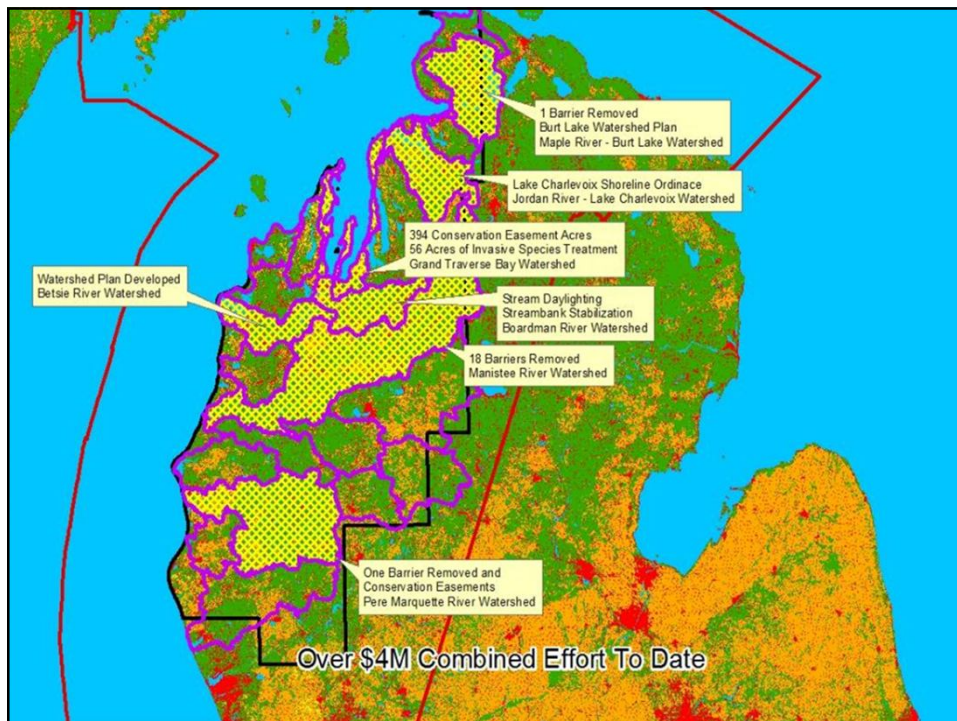
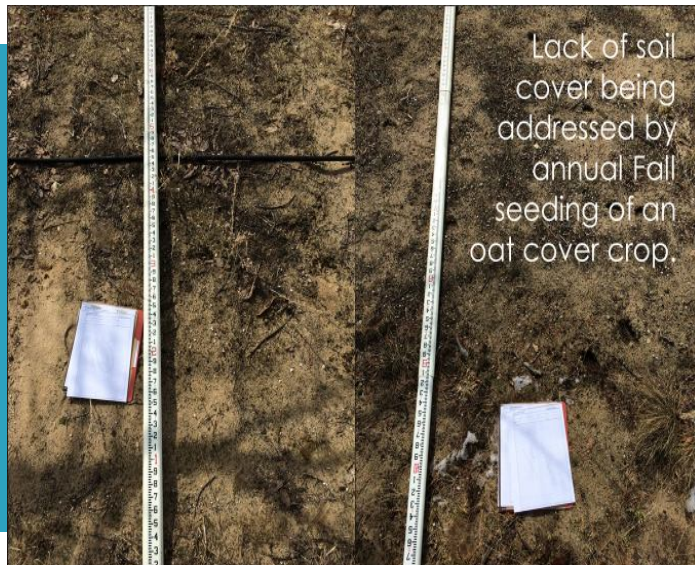


Federally-endangered  
Hungerford's Crawling  
Water Beetle.

"Manidoshenhs": little spirits

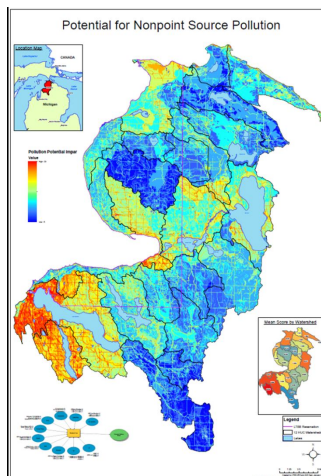
# Conservation Stewardship Program

- Undertaking additional conservation activities
- Improving, maintaining, and managing existing conservation activities





# Tribal Nonpoint Source Program



Context for impairments, prioritization, and visual representation

- Prioritize watersheds and categories of impairment
- Road/stream crossings account for 44% of impairments
- Cause hydrology and fish passage issues