

Lower Grand River Habitat Restoration
&
Farmland Conservation Project

A MATTER OF BALANCE:
Perceptions, Engagement and Partnerships
for On-Farm Conservation

Wednesday, March 6, 2019

USDA
Regional
Conservation
Partnership
Program

Michigan Chapter
Soil & Water Conservation
Society Seminar

**Partners in Soil and Water Conservation:
Local Impacts with the
Regional Conservation Partnership Program (RCPP)**

A collaborative process. Understanding the project partners and outreach – Roadmap to Success!

- Non-profit
- Governmental
- Inter-agency
- Urban community
- Agricultural community
- Community outreach efforts



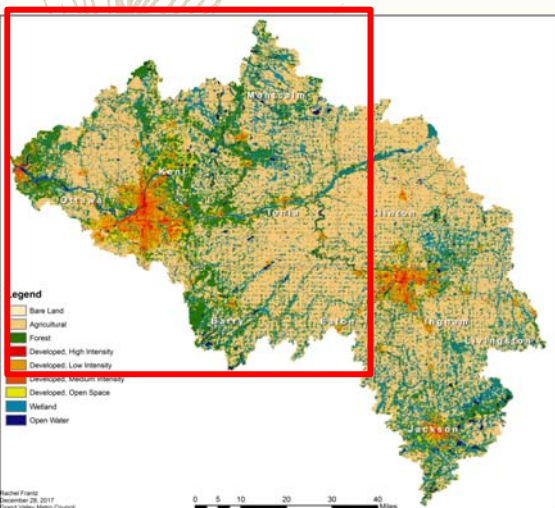


How it all started... Urban Waters Federal Partnership

The Grand River Restoration project drew the attention of federal agencies and was selected as one of 19 UWFP locations.



The Lower Grand River Watershed





RCCP Application

The USDA awarded the Grand Valley Metropolitan Council (GVMC) an **\$8 million** RCCP grant in September 2017. The funding will be used to address water quality degradation, inadequate wildlife habitat, and soil erosion in the Lower Grand River Watershed.

Over **\$8 million** was secured from 22 community partners as leverage to match this federal funding

<p>Government</p>	<p>Conservation/Education Groups</p>	<p>GVMC</p> <p>Engineering Consultants</p> <p>Local Foundations</p>
--------------------------	---	--

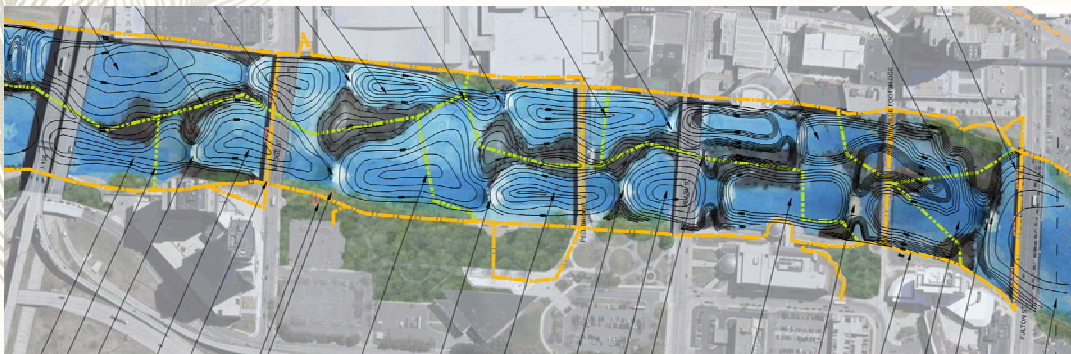
Project Funding

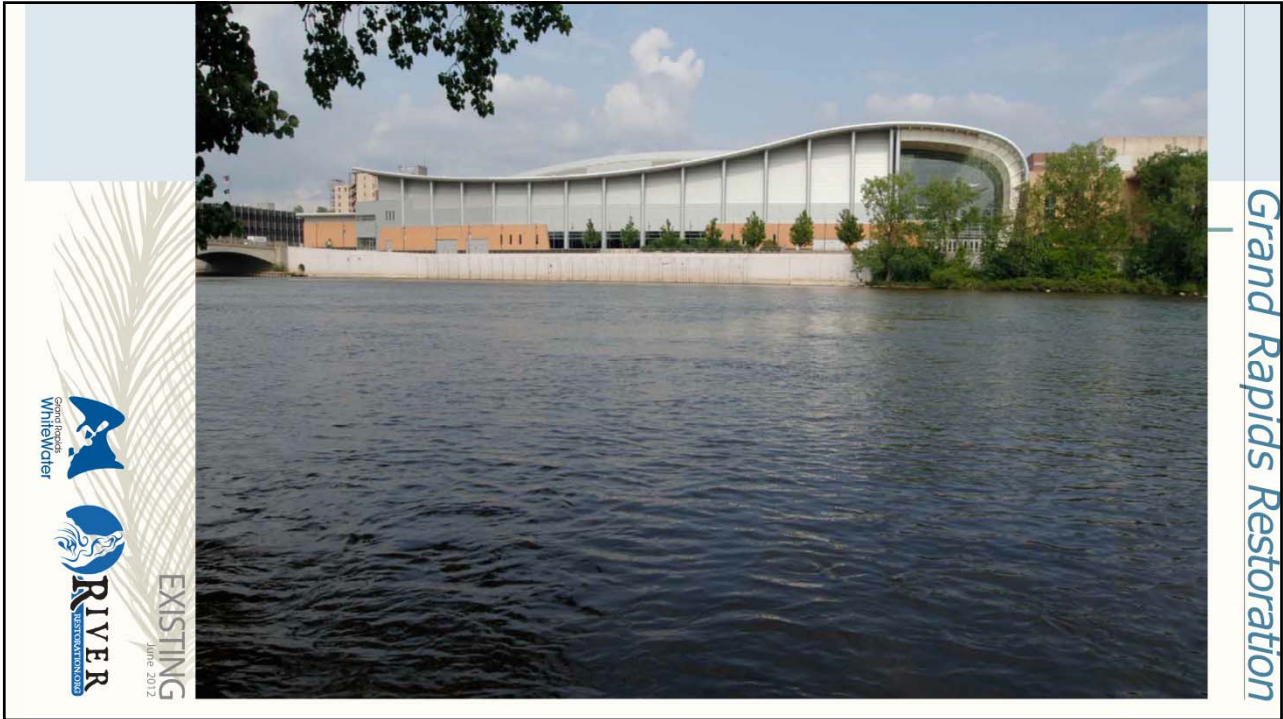
NRCS Distribution of Funds

	NRCS EQIP	NRCS PL-566	Partner Contribution	Totals
NRCS TA for Partner Use (Obligation Amount)	\$ 60,972	\$ 752,793	\$ -	\$ 813,765
NRCS TA for NRCS Use	\$ 518,260	\$ 150,000	\$ -	\$ 668,260
NRCS FA for project	\$ 2,300,000	\$ 4,217,975	\$ -	\$ 6,517,975
Final NRCS Fund Project Total			\$ -	\$ 8,000,000
Final Project Total	\$ 2,879,232	\$ 5,120,768	\$ 8,002,392	\$ 16,002,392

PL-566 Watershed Rehabilitation in the Grand River

Restore 47 acres of boulders & substrate





Grand Rapids Restoration



EXISTING
June 2012

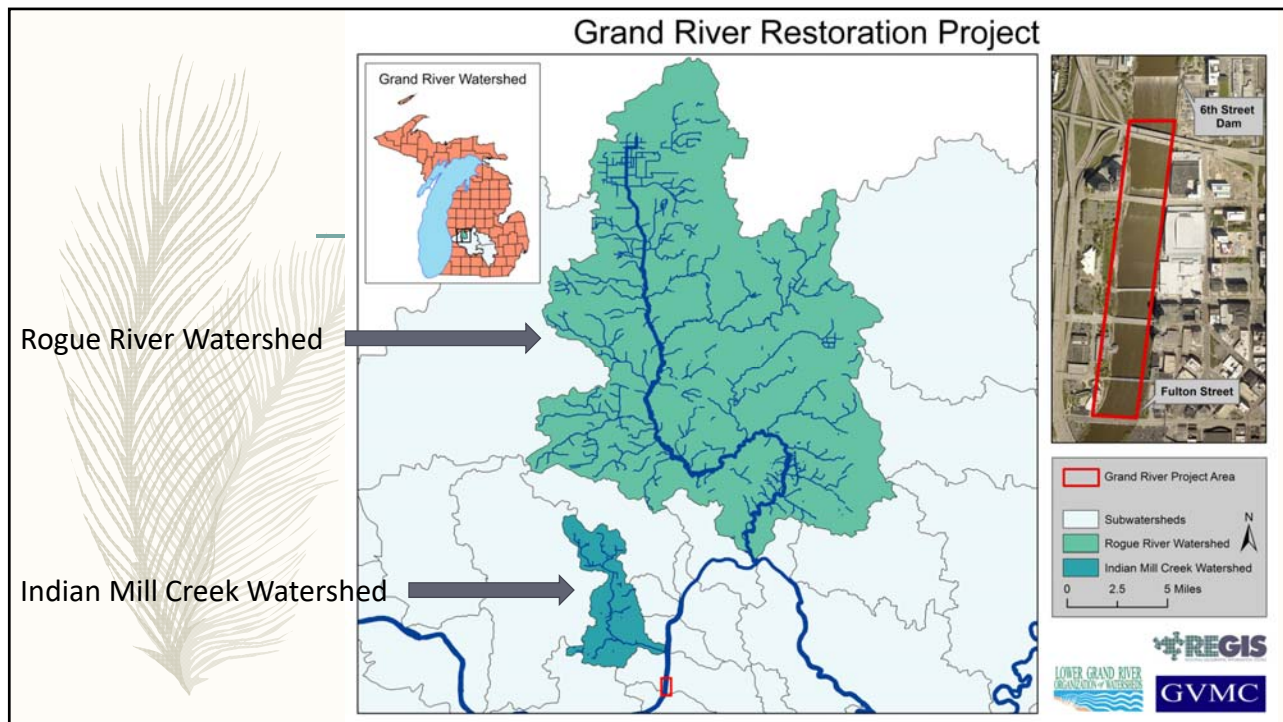


Environmental Quality Incentive Program (EQIP)

Resource Concerns

- ✓ Fish & Wildlife – Inadequate Habitat
- ✓ Water Quality Degradation
- ✓ Soil Erosion





Rogue River and Indian Mill Creek Watersheds – Priority Practices

- Conservation Cover
- Grassed Waterway
- Nutrient Management
- Tree/Shrub Establishment

- Riparian Forest Buffer
- Cover Crop
- Filter Strips
- Wetland Restoration
- Residue and Tillage Mgmt.




Education & Outreach

Kent Conservation District, Rogue River Watershed Partners, and Trout Unlimited present



free pancake breakfast

Learn about special non-competitive funds for those landowners in our watershed to help protect our soil and farm practices through the Natural Resources Conservation Service



OCTOBER 10 | 7AM - 9AM
6878 BELDING RD NE, ROCKFORD, MI 49341




Farm Bureau / MAEAP Ag Producer Bus Tour

Join us Friday, August 24th 8-1pm for a fun tour of your watershed. Learn what local farmers are doing to protect their soil and how to access new cost-share funds. Free lunch!

FIND OUT MORE / SIGN UP
WWW.KENTCONSERVATION.ORG
(616) 222-5846

Chat with us over a free lunch and learn about special funding for your neighborhood farms and woods!

Wednesday, February 20th
12:00 pm-1:00 pm

Sparta Hunting and Fishing Club
13218 Long Lake Drive



With Kent Conservation District, Rogue River Watershed Partners,
and the Natural Resources Conservation Service

Regional Conservation Partnership Program

The RCPP addresses restoration and conservation within the Indian Mill Creek and Rogue River watersheds. The Natural Resources Conservation Service (NRCS) will provide eligible landowners with technical and financial assistance to implement best management practices to improve stream and habitat quality.



Accomplishments to Date - Outreach

- Tillage survey: 33 fields in Indian Mill Creek, 24 fields in Rogue River
- Mailings: >300 residents received mailers
- Free Breakfasts & Lunches, over 25 participants
- 43 One-on-one meetings
- RCPP Bus Tour, over 60 participants
- Pints & Pines events
- Friends of Indian Mill Creek meetings
- Rogue River Watershed Partners meetings

Forest Health Outreach

Riparian Forest Buffer



“Trees next to a waterway”





MICHIGAN FORESTRY Assistance Program



Traditional Model

Minimum 100 ft or 30% of Flood Plain

15 ft 20 ft

(after Welsch, 1991)

Zone 1	Stream	Zone 1	Zone 2	Zone 3
Undisturbed Forest		Undisturbed Forest	Managed Forest	Runoff Control

Accomplishments to Date - Signups

FY2018-Funded Lower Grand River RCPP-EQIP Conservation Practices Applied as of 10/31/18

County	Contract Obligation	Contract Acres	Code	Practice	Units	Amount Planned	Practice Obligation
KENT	\$ 3,155.00	8.9	327	Conservation Cover	ac	4	\$ 3,155.00
KENT	\$ 21,741.00	13.8	382	Fence	ft	2095	\$ 3,352.00
			516	Livestock Pipeline	ft	1700	\$ 5,729.00
			528	Prescribed Grazing	ac	31.8	\$ 777.00
			561	Heavy Use Area Protection	sq ft	485	\$ 2,522.00
			614	Watering Facility	no	4	\$ 2,187.00
			533	Pumping Plant	no	1	\$ 1,678.00
			642	Water Well	no	1	\$ 5,496.00
KENT	\$ 2,238.00	31.4	666	Forest Stand Improvement	ac	22.6	\$ 2,238.00
KENT	\$ 6,591.36	13.7	327	Conservation Cover	ac	12.8	\$ 6,308.00
			490	Tree/Shrub Site Preparation	ac	0.9	\$ 140.00
			612	Tree/Shrub Establishment	ac	0.9	\$ 144.00
KENT	\$ 1,196.00	14.5	666	Forest Stand Improvement	ac	14.5	\$ 1,196.00
	\$ 34,921.36						

Monitoring Success

TASK

Task 1. Monitoring Plan for Mitigation Effectiveness

Task 2. Management and Technical Analysis of Monitoring Data


Task 3. Additional monitoring

- Restoration Perspectives (Social)
- Targeted Habitat Assessments

Rogue River - Nash Creek Subwatershed

Conservation Practice: Native Planting 2018



Address: 3631 13 Mile Rd. NW, Sparta, MI #####
 Township: Sparta
 Location (MID): 43.1634° N, -85.7610° W
 Acreage: ##
 Site Map:



Monitoring

Monitoring Location: Road-stream crossing at Peach Ridge Ave. NW, 1500' north of 13 Mile Road NW.

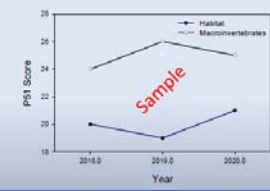
- P51-Habitat: During November by Encompass Ecological Consulting.
- P51-Macroinvertebrates: During June by Trout Unlimited.

Downstream Upstream

Monitoring Data

Summary of Monitoring Data:



Year	Habitat P51 Score	Macroinvertebrates P51 Score
2018.0	24	20
2019.0	26	19
2020.0	24	21

Looking Ahead



- Innovative Projects
- Continuing to prioritize areas
- Select demonstration sites
- Build on-the-ground support
- Hire an agricultural technician
- Develop a Cost-Benefit Guide





Contacts

Wendy Ogilvie

Director of Environmental
Programs

Grand Valley Metro Council
678 Front Ave., NW, Suite 200
Grand Rapids, MI 49504

Wendy.ogilvie@GVMC.org

o 616-776-7605

f 616-774-9292

c 616-901-8172

www.GVMC.org

www.LGROW.org

Matthew Soehnel

District Conservationist
Natural Resources Conservation
Service

3260 Eagle Park Drive, Suite 111
Grand Rapids, Michigan 49525

matthew.soehnel@mi.usda.gov

(P) 616 942-4111 ext. 3

(F) 855 729-8876

Jessie Schulte

Conservation District Manager
Kent Conservation District
3260 Eagle Park Dr NE Suite 111
Grand Rapids, Michigan 49525

jessie.schulte@macd.org

Office: (616) 222- 5801

Cell: (248) 245-3977

www.kentconservation.org