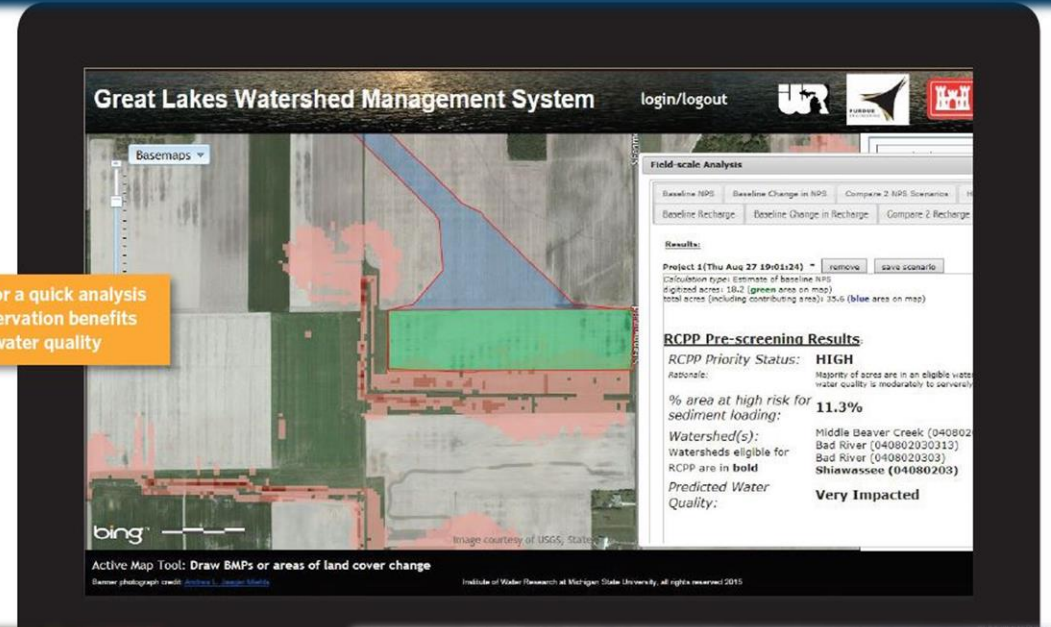


GLWMS: Applications in the Field



Allows for a quick analysis
of conservation benefits
to water quality



Great Lakes Watershed



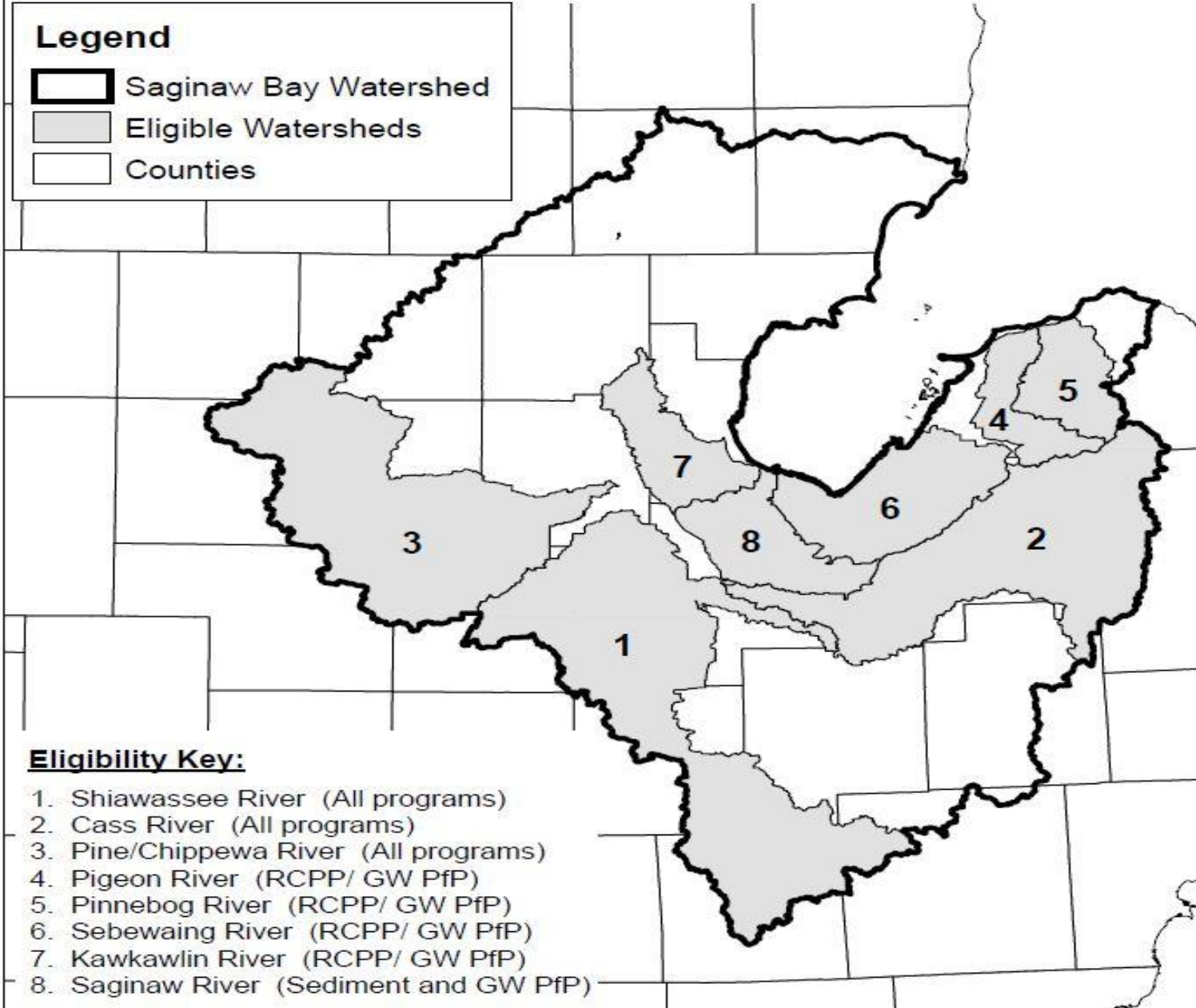
Where GLWMS is
being actively applied
to target conservation
in Saginaw Bay
Watershed:



Saginaw Bay Watershed Conservation Partnership Program Eligibility Map

Legend

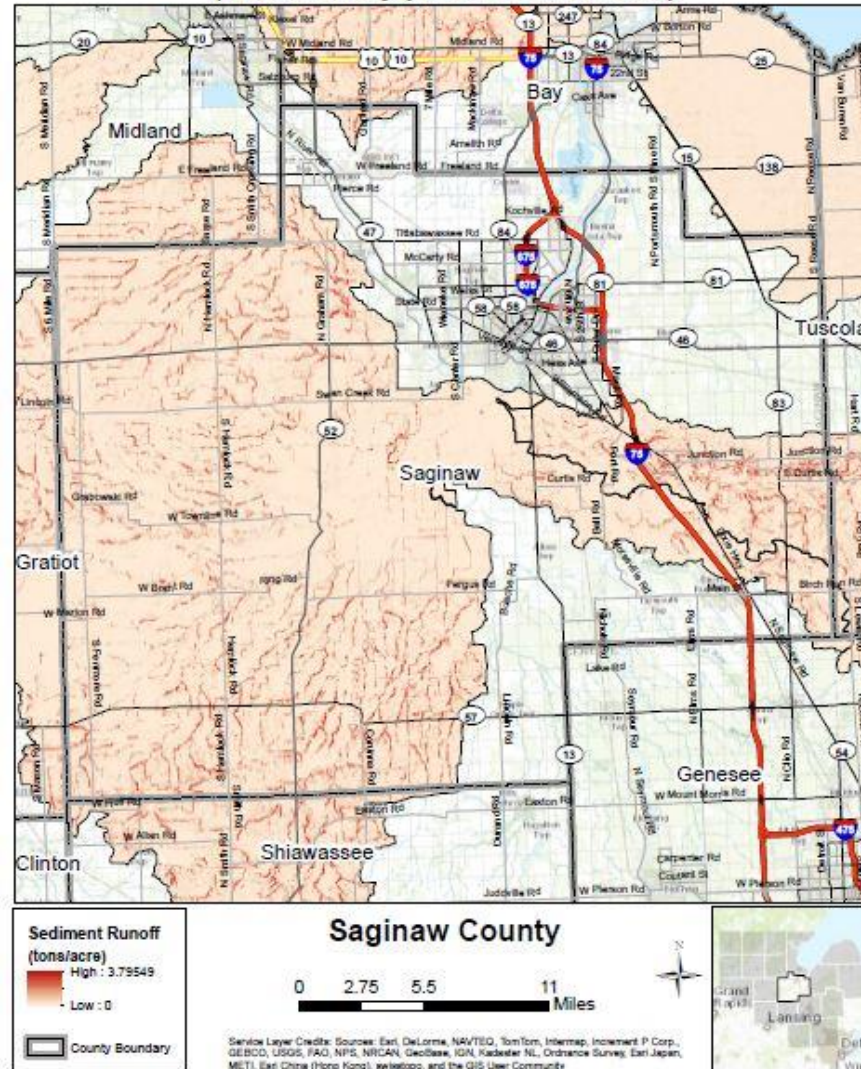
-  Saginaw Bay Watershed
-  Eligible Watersheds
-  Counties



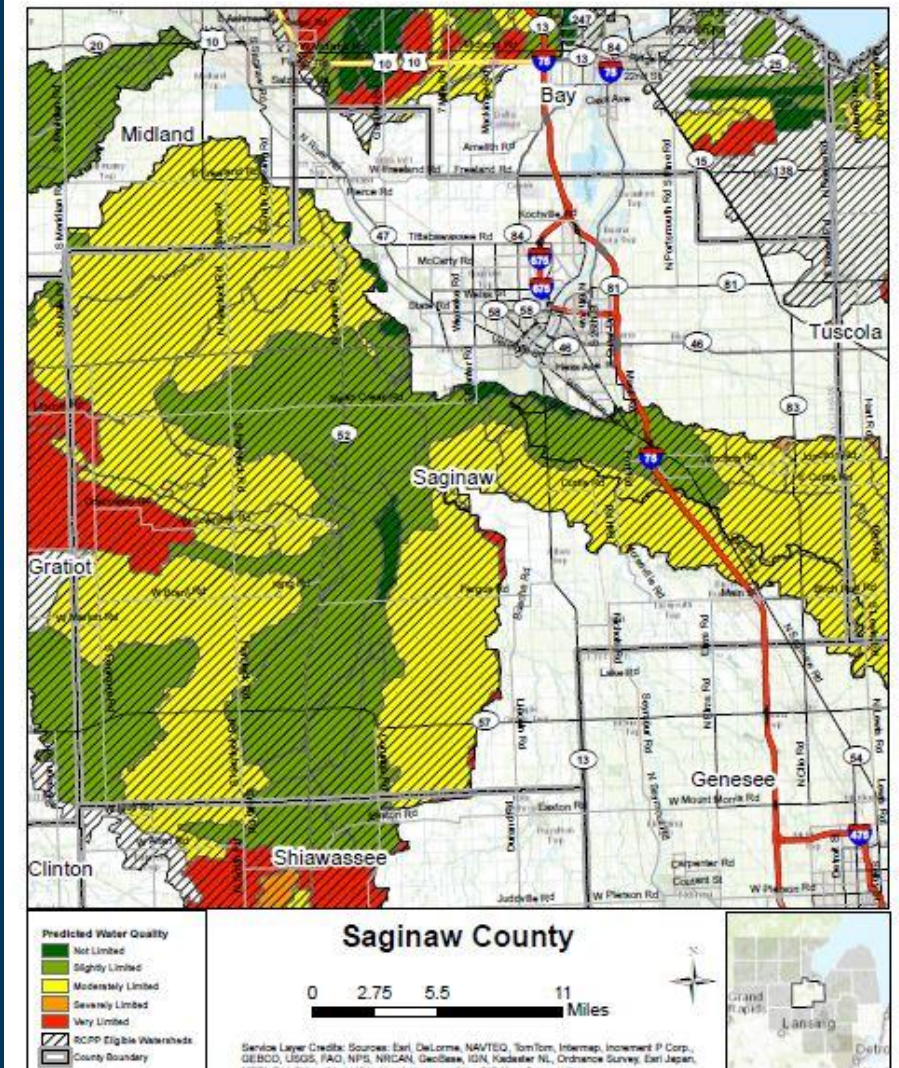
GLWMS: Applications in the Field

For RCPP →

**Sediment Runoff in RCPP Eligible Watersheds
(Indicated by pink shaded areas)**



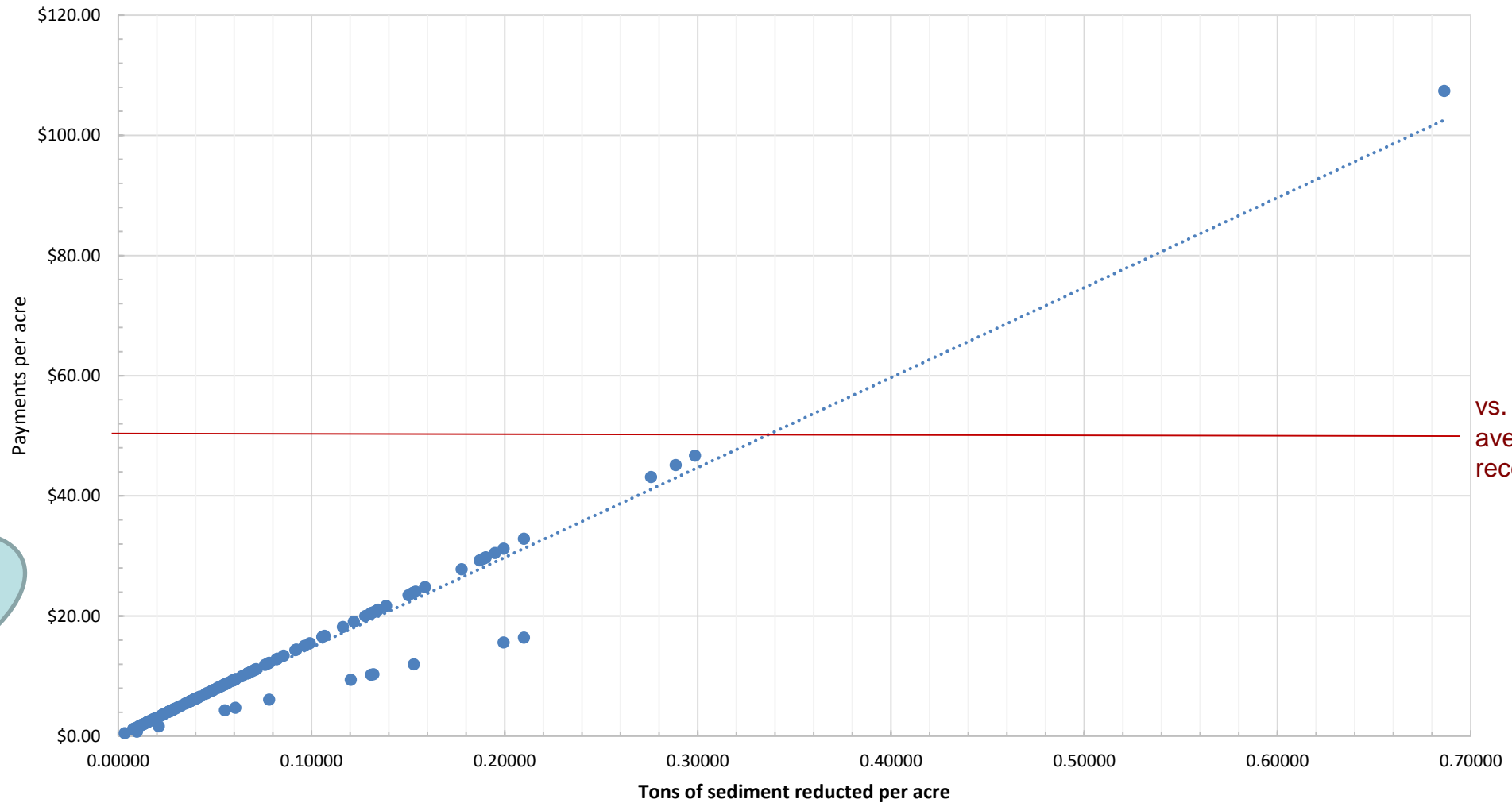
Predicted Water Quality in RCPP Eligible Watersheds



GLWMS: Applications in the Field

Sediment Reduction vs. Compensation in Upper Bad River Watershed Pilot Project

Sediment Reduction Project Results, September 2016



Pay for Performance →

For more information:

- Saginaw Bay Watershed RCPP: www.nature.org/saginawRCPP
- Saginaw Bay Watershed (Sediment) Pay for Performance:
www.nature.org/saginawbayPfP
- Saginaw Bay Watershed (Groundwater Recharge) Pay for Performance:
www.nature.org/saginawbayGWR